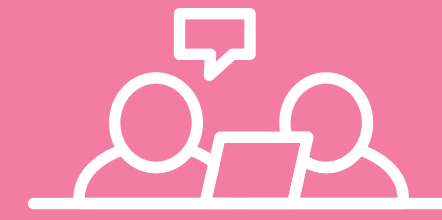


HOW TO BE AN INCLUSIVE LEADER AT WORK



EMPOWERMENT

Empowerment is all about enabling team members to develop and excel and to give them the best conditions to do so.



ACCOUNTABILITY

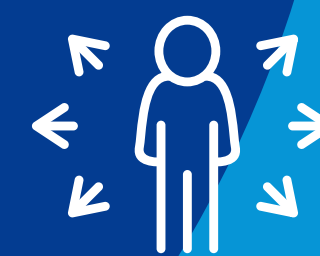
Accountability is about demonstrating confidence in team members by holding them responsible for performance that's within their control.

E.A.C.H



COURAGE

Courage is about putting personal interests aside to achieve what needs to be done. That means acting based on convictions and principles even when it requires personal risk-taking.



HUMILITY

Humility is about admitting mistakes, accepting and learning from others and asking for help in order to overcome limitations.